

Trollhättan Action Week 15 km individual start.

Sunday 25th August 2024

Competition information / PM

Last updated 2024-08-19.

The information in this PM will be supplemented / updated regularly, so be aware of changes and read this PM closely into the race.

1 Registration / Qualification

Registration via SSF TA from the **01/06 to 22/08** via the link below:

<https://ta.skidor.com/EventDetails.aspx?EventID=45803&orgid=80>

Participants registered but are not starting are asked to inform the organizer that they will not participate as soon as possible (at the latest at the team captain meeting).

Registration cost 250 SEK.

2 The competition arena

The competition arena with start and finish is in the fall and hydropower plant area in Trollhättan. A brand-new track has been designed in 2022 with two hills to climb two times.

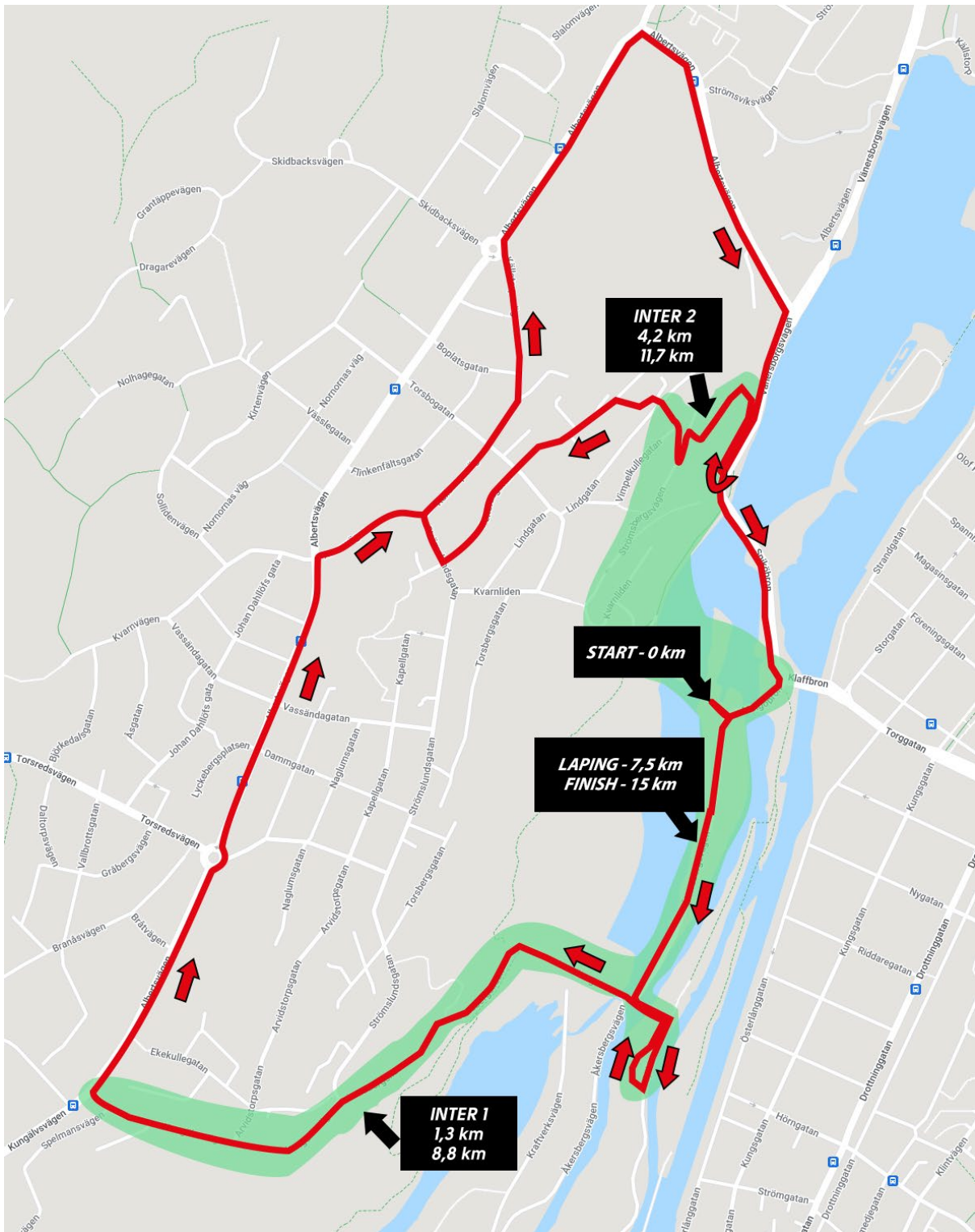
3 Course

The course is a lap course according to the picture of the competition arena.

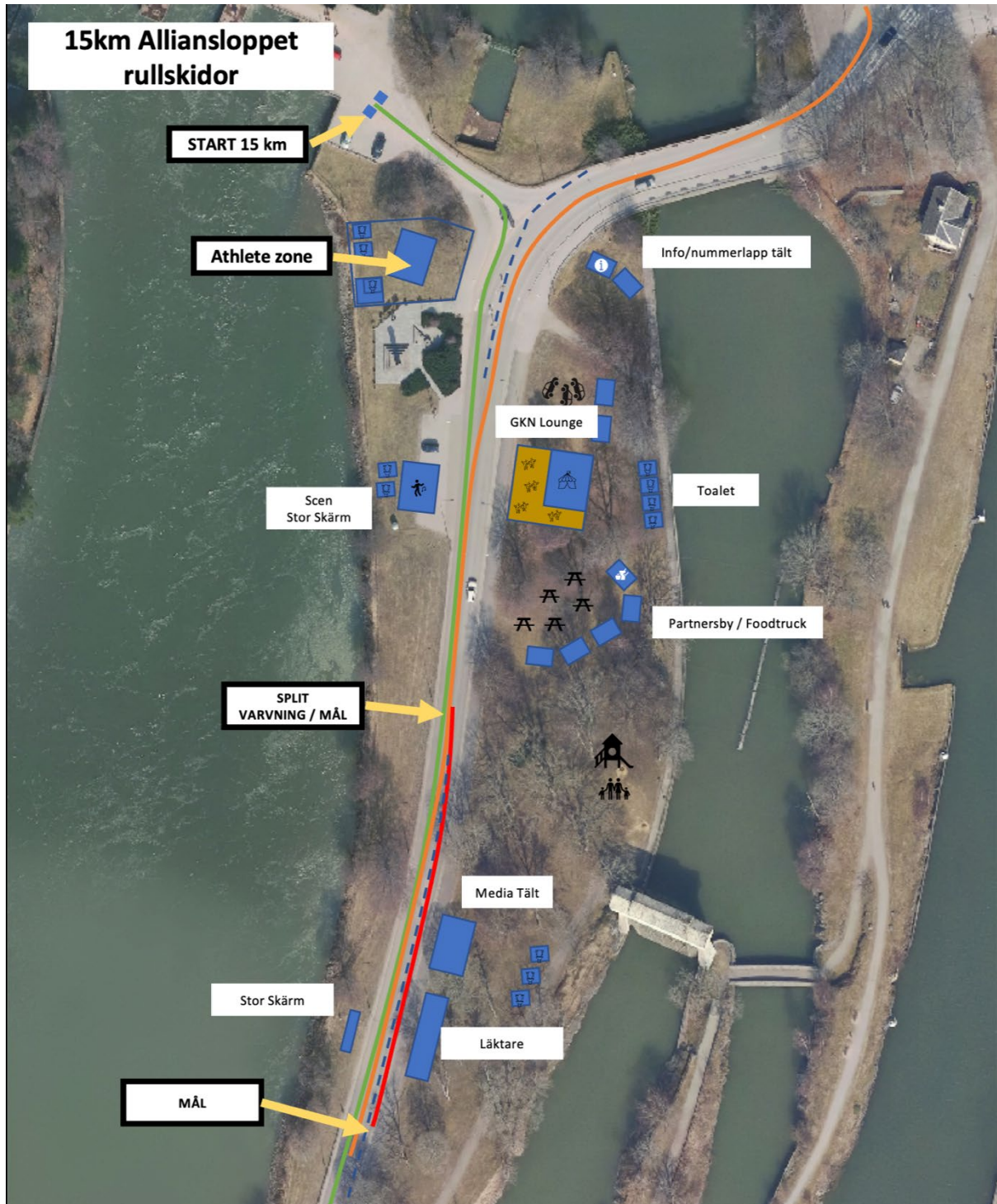
The track is constituted of **a long loop** and **an inner loop** of a total of 7,5km to go through two times.

The course is race as following: long loop + inner loop, lapping at the start finish zone, long loop + inner loop, finish.

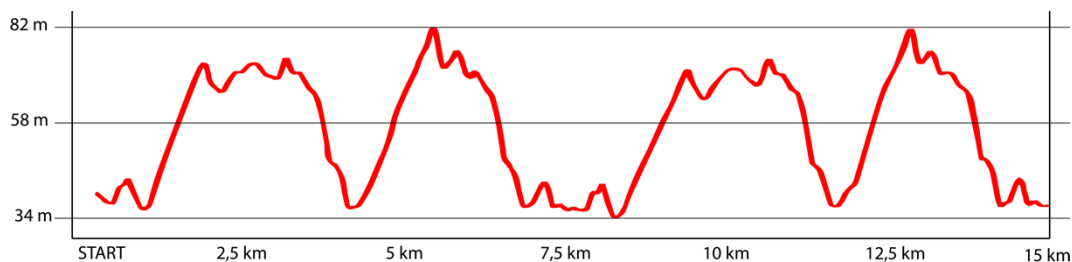
Overview of the course



Overview Start-Finish area



4 Elevation profile



5 Start times / Classes

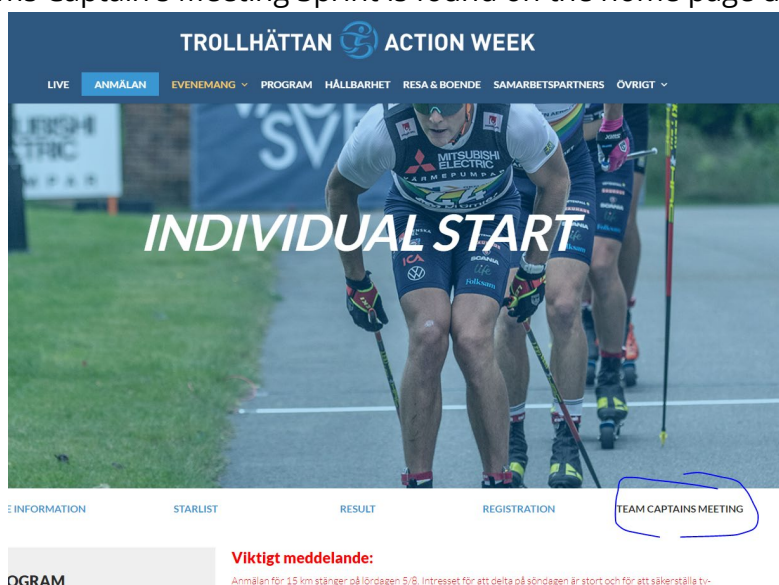
Men 15 km: First start 12.05 – 30 sec start intervals

Women 15 km: First start 13:35 - 30 sec start intervals

6 Team captain's meeting

The digital team captain's meeting will be held on **Sat. 24th August at 19:00.**

Link to Teams Captain's Meeting Sprint is found on the home page under events:



The presentation will be published after the meeting at the same place/link.

7 Bib distribution

Bib and timekeeping transponders will be picked up in the Bib tent on the way into the Competition Arena. Opening hours: 10:00-14:00

8 Provided loan skis

All athletes are provided with skis from Swenor, wheel number 3.

The skis are picked up outside of athlete's tent and returned in the same place after the race. The provided skis are tested on the track or the warm-up area.

The skis are available from 11:15 for MEN and from 13:00 for WOMEN.

NOTE: It is the responsibility of each athlete to pick up and bring the skis to start as well as return them at the same location after the race.

9 Warm-up and official training on the track

The course is open for official training and warm-up between 10:30-11:50, then warm-up takes place around the start and south of the competition area (limited space). It is completely forbidden to warm-up on the racetrack when the competition is going.

10 Toilets

Toilets are available on the competition arena at the start and finish.

11 Athlete zone

Athletes have access to tents at the start and finish. Bags is stored at the Athlete zone tent at the start and handled by the respective skiers.

12 Start procedure

The start is made with a start gate and 30 sec start intervals.

13 Pole support

Pole support is allowed along the entire course. Observe security, other competitors, officials and TV production teams.

14 Abandon race

If you abandon the race, you must inform the officials at the arena at the finish area for safety reasons. You must NOT cross the finish line with a transponder if you abandon the race.

15 Result list

The results list is posted on the competition arena and published on the website.

16 Protest

Any protest following ICR 261 must be submitted to a jury member not later than 15min after the results list has been published, cost 1000 SEK.

17 Prize giving ceremony

Prize giving for places 1-6 takes place immediately after the last finish in each class, approximately 15:00 for both men and women, in the finish area and announced by the speaker. The final prize ceremony for Mitsubishi Electric World Classic Tour will be held directly after the day race prize ceremony.

Position	Sprint Damer	Sprint Herrar	Alliansloppet Damer	Alliansloppet Herrar	Distans Damer	Distans Herrar	TOTAL
1	10000	10000	50000	50000	10000	10000	
2	8000	8000	20000	20000	8000	8000	
3	5000	5000	10000	10000	5000	5000	
4	3000	3000	8000	8000	3000	3000	
5	2000	2000	5000	5000	2000	2000	
6	1000	1000	2000	2000	1000	1000	
Spurtpris 1			5000	5000			
Spurtpris 2			5000	5000			
TOTAL	29000	29000	105000	105000	29000	29000	346000

18 Healthcare

Medical personnel are available at the Alliansloppet Race Arena with access to vehicles for a short response time across the entire course.

The medical staff can be reached via Hälsobolaget, TEL: 0720 - 80 87 30

In case of emergency, call 112! Norra Älvsborgs Länssjukhus (NÄL) is only 6 km from Alliansloppet event arena.

Emergency services and officials are informed.

19 Form of competition / rules and safety

The competition takes place according to the Swedish Ski Association's rules. The competition is conducted in classic technique; all other riding is prohibited and entails disqualification. Along the track there are officials who control the riding technique with video. The competition will be televised and a jury members will follow the TV images.

Follow directives from officials!

Helmet and goggles are mandatory. If rain goggles are optional after information from the jury.

Everyone ensures to maintain a high level of sportsmanship before and during and after the competition.

Pole-tips

SSF wants to make all participants aware that the rules regarding pole tips will come into force. Pole-tips must be designed as follows:

"396.2.6 Cross-Country ski poles must be used with Cross-Country skiing tips must be used. Alternatively poles tips must have safety rigid plastic protections with diameter ≥ 30 mm. These protections must be placed maximum 45 mm above the metallic tips. The rule will be implemented from 01st July 2023."

20 Competition management

Chief of competition: Fredrik Liljesäter, fredrik@alliansloppet.se, +46 705 410615

Race secretary: Niclas Lund

Track and security Manager: Martin Sandin

21 Jury

Technical Delegate (TD): Michel Rainer (ITA)

Assistant Technical Delegate (ATD): Erik Björelind (SWE)

Chief of competition: Fredrik Liljesäter (SWE)